

# Luna Lounge

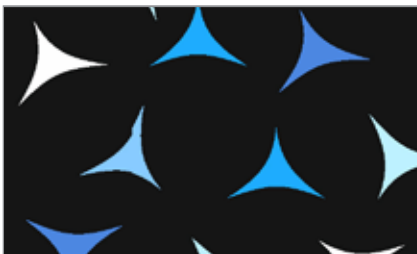
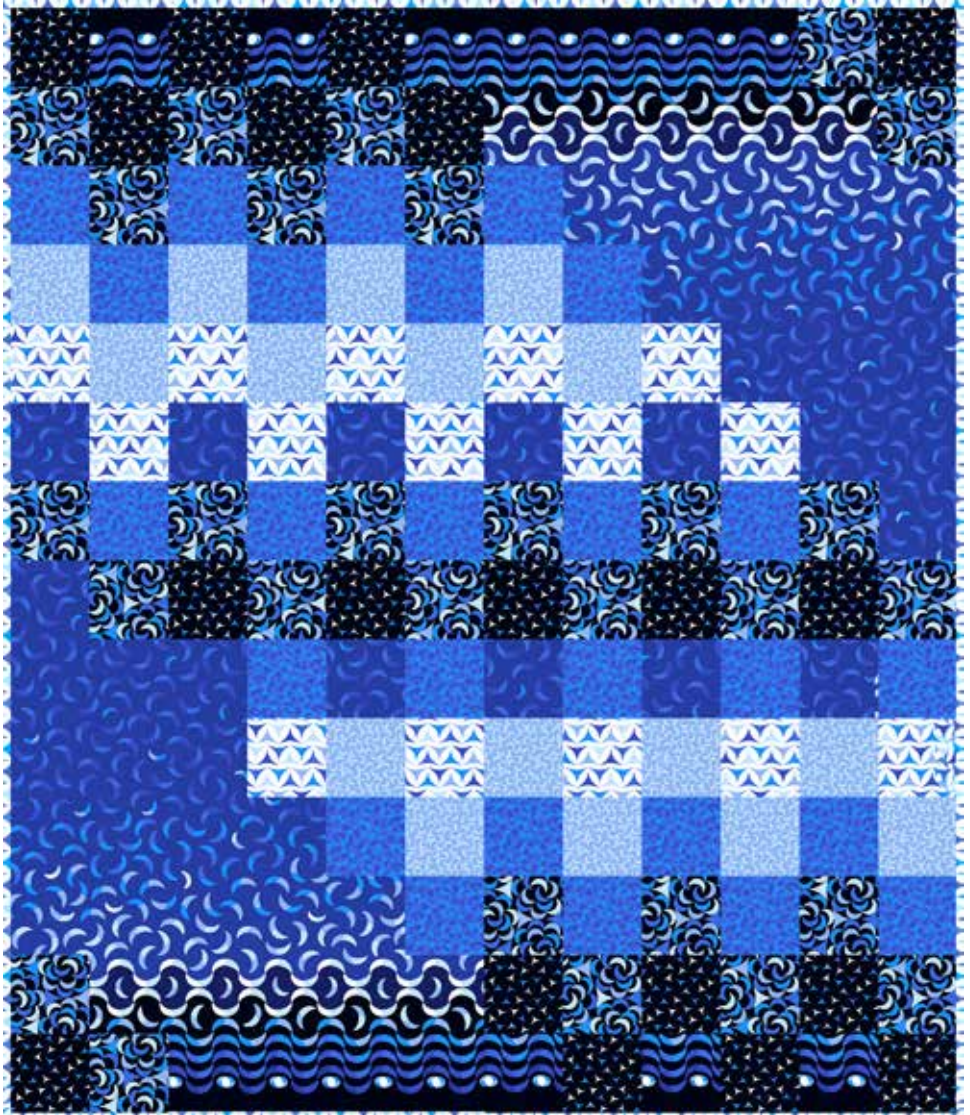
BY CAROL VAN ZANDT



Step Up quilt design by:  
**Carol Van Zandt**

Quilt Size: 48" x 56"

[andoverfabrics.com](http://andoverfabrics.com)



## About Luna Lounge

Come to the Luna Lounge! Inviting retro modern patterns with crescents and triangle shapes create a playful and relaxing vibe. — *Carol Van Zandt*

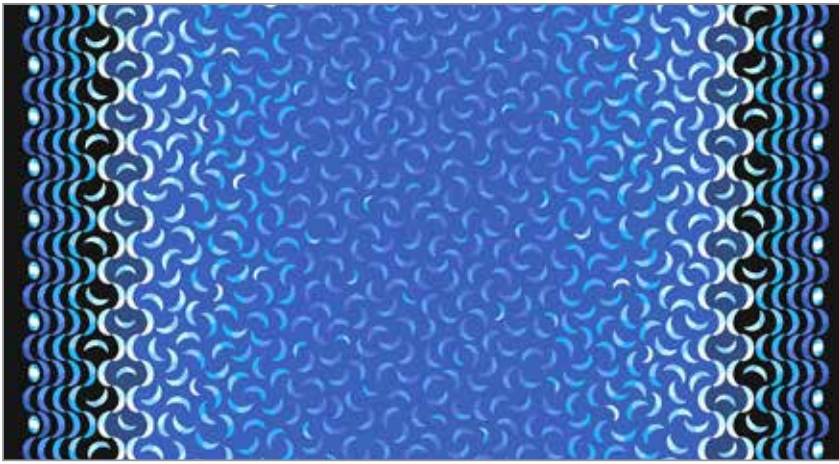
andover



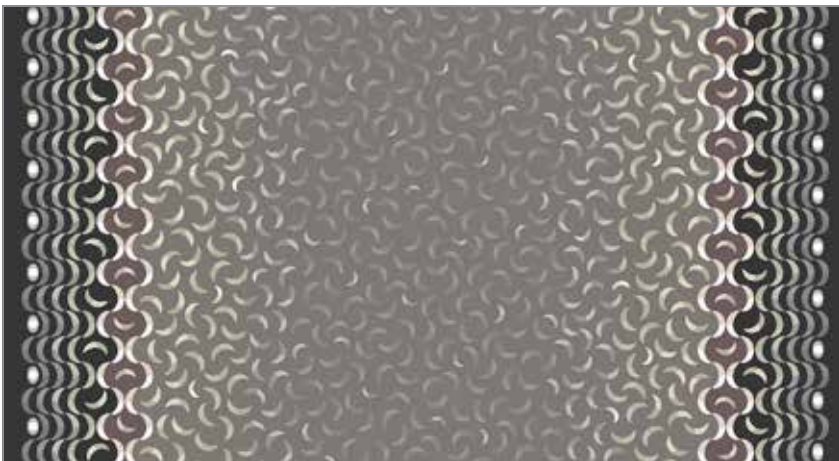
makower uk

Free Pattern Download Available

1384 Broadway New York, NY 10018  
Tel. (800) 223-5678 • [andoverfabrics.com](http://andoverfabrics.com)



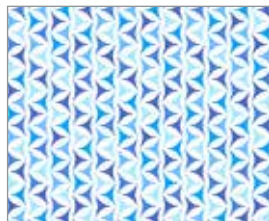
7714-B 1¼ yds



7714-N



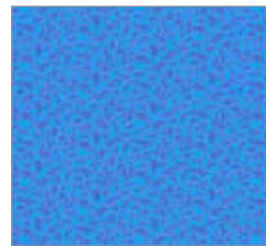
7715-BK 5⁄8 yd (extra yds. needed for backing)



7716-B 1 yd (includes binding)



7717-BK ½ yd



7718-B 5⁄8 yd



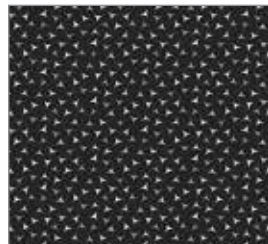
7719-B ½ yd



7715-NK



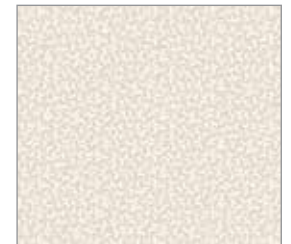
7716-N



7717-NK



7718-N



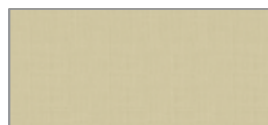
7719-NL



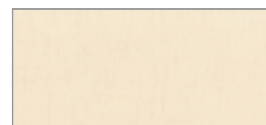
A-T-Cobalt



A-T-LACQUER



A-T-SANDSTONE



A-T-TAPIOCA



A-T-WHITE LIES

FABRIC	5 KITS	10 KITS	20 KITS
7714-B	1	1	2
7716-B	1	1	2
FROM EACH	1	1	1
*7715-BK	7717-BK	7718-B	7719-B

BACKING

*7715-BK	1	2	4
----------	---	---	---

Yardage needed for backing: 3 YDS per kit

**Bolts needed to cut project kits.**

15 yds = 1 bolt

Fabrics shown are 10% of actual size.

Fabrics used in quilt pattern are shown in black.

# Luna Lounge

BY CAROL VAN ZANDT

andover : makower uk  
 : The Harley Studio